

## Shelters

# Dresden D4 a/a UP

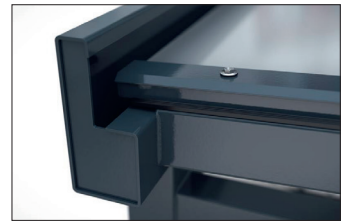
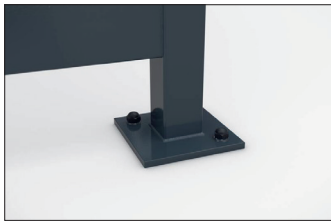
**Your versatile and future-proof public transport shelter.**

Type-tested, versatile shelter system with monopitch roof construction, Laminated safety glass roofing, with toughened safety glass rear and side walls.

Article number	EAN	Width	Height	Depth
102100395	4250366538440	4380 mm	2730 mm	1510 mm



Clear width	4260 mm
Clear height	2360 mm
Clear depth	1360 mm
Roof style	Pent roof
Roof type	Laminated safety glass
Colour	RAL 7016 - Anthracite grey
Base area	5,70 m <sup>2</sup>
Mounting type	Floor mounting
Base material	Steel
Snow load	2,50 kN/m <sup>2</sup>



Type-tested, versatile shelter system with square tubing uprights and elegant monopitch roof construction, Integrated water tank made of multiply folded and stiffened sheet steel and combined rain gutter. The roof is covered with frosted laminated safety glazing according to DIN 18008. The entire steel construction is hot-dip galvanised and coated with environmentally friendly

two-component paint with C4 medium corrosion protection class. Available in RAL colours of choice (except pearl and signal colours). Including rear and side panels made of clear toughened safety glass and fixed with glass holders. Five square tubing uprights with footplates for ground anchoring. Fully assembled.

- + Hot-dip galvanised steel monopitch roof construction
- + Heavy-duty roofing with preliminary static test
- + Toughened glass rear and side walls included
- + Custom coating in at least C4 medium quality
- + Fully assembled ex works