

## Shelters

# Köln K2 b/a UP

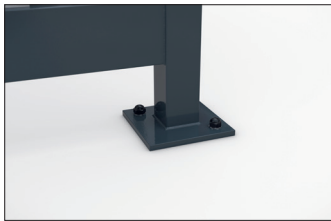
**Elegant, versatile, flexible and for very high snow loads.**

Hot-dip galvanised flat roof steel construction with weatherproof troughed sheet roof, selectable side walls and suitable for very high snow loads.

| Article number | EAN           | Width   | Height  | Depth   |
|----------------|---------------|---------|---------|---------|
| 102000730      | 4250366531977 | 2165 mm | 2440 mm | 2165 mm |



|               |                            |
|---------------|----------------------------|
| Clear width   | 2045 mm                    |
| Clear height  | 2290 mm                    |
| Clear depth   | 2105 mm                    |
| Roof style    | Flat roof                  |
| Roof type     | Troughed sheet             |
| Colour        | RAL 7016 - Anthracite grey |
| Base area     | 4,30 m <sup>2</sup>        |
| Mounting type | Floor mounting             |
| Base material | Steel                      |
| Snow load     | 1,90 kN/m <sup>2</sup>     |



Versatility and flexibility are already built into our timelessly elegant „Köln“ shelter system. The „Köln“ is available in several sizes and colours, with variable roof lengths and widths and optimised for your application. Printable toughened safety glass fastened with glass holders or other materials are available for the rear and side panels. Even systems with protected interior

and access doors can be realised. The drainage takes place via ground-level gargoyles. The „Köln“ is suitable for very high wind loads and in this „Alpine“ variant for even higher snow loads. Custom coating in at least C4 medium quality is also offered. Ready assembled or as a kit.

- + Hot-dip galvanised flat roof steel construction
- + Side- and back walls available in different variants and configurations
- + Custom painting in min. C4 medium quality
- + High wind and snow loads
- + Available with a wide range of accessories