

## Shelters

# Köln K3 a/c BS UP

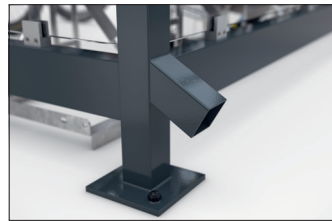
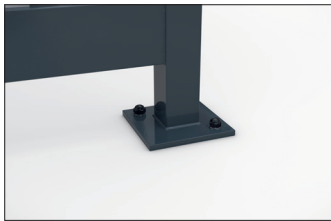
### Elegant, versatile, flexible and with type statics

Hot-dip galvanised flat roof steel construction with a weatherproof troughed sheet roof in variable sizes, selectable side walls and pre-approved type statics.

Article number	EAN	Width	Height	Depth
102001283	4250366532141	3180 mm	2440 mm	2165 mm



Clear width	3060 mm
Clear height	2290 mm
Clear depth	2105 mm
Roof style	Flat roof
Roof type	Troughed sheet
Colour	RAL 7016 - Anthracite grey
Base area	6,40 m <sup>2</sup>
Mounting type	Floor mounting
Base material	Steel
Snow load	1,45 kN/m <sup>2</sup>



Versatility and flexibility are already built into our timelessly elegant „Köln“ shelter system. The „Köln“ is available in several sizes

and colours, with variable roof lengths and widths and optimised for your application. Printable toughened safety gla

- + Hot-dip galvanised flat roof steel construction
- + Side- and back walls available in different variants
- + Custom painting in min. C4 medium quality
- + Type statics for high wind and snow loads
- + Available with a wide range of accessories