

Shelters

Köln K3 e/a

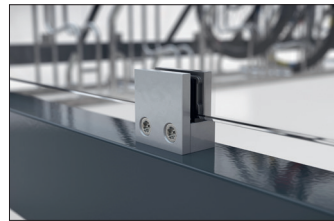
Elegant, versatile, flexible and with type statics.

Hot-dip galvanised flat roof steel construction with weatherproof troughed sheet roof in variable sizes, selectable side walls and pre-approved type statics.

Article number	EAN	Width	Height	Depth
102001339	4250366532561	3180 mm	2510 mm	2165 mm



Clear width	3060 mm
Clear height	2360 mm
Clear depth	2105 mm
Roof style	Flat roof
Roof type	Troughed sheet
Colour	RAL 7016 - Anthracite grey
Base area	6,40 m ²
Mounting type	Floor mounting
Base material	Steel
Snow load	1,90 kN/m ²



Versatility and flexibility are already built into our timelessly elegant „Köln“ shelter system. The „Köln“ is available in several sizes and colours, with variable roof lengths and widths and optimised for your application. Printable toughened safety glass fastened with glass holders or other materials are available for the rear and side panels. Even systems with protected interior

and access doors can be realised. The drainage takes place via ground-level gargoyles. The „Köln“ is suitable for very high wind loads and snow loads and can be set up everywhere thanks to certified type testing without additional static testing being required. Custom coating in at least C4 medium quality is also offered. Ready assembled or as a kit.

- + Hot-dip galvanised flat roof steel construction
- + Side- and back walls available in different variants and configurations
- + Custom painting in min. C4 medium quality
- + Type statics for high wind and snow loads
- + Available with a wide range of accessories