

Shelters

Paris 801

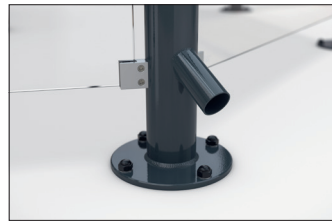
The ideal meeting place in all weathers

Corrosion-resistant, colour-coated, octagonal tubular steel frame construction with pitched roof of glass or galvanised sheet steel.

Article number	EAN	Width	Height	Depth
102100037	4250366526874	3300 mm	3100 mm	3300 mm



Clear width	3140 mm
Clear height	2200 mm
Clear depth	3140 mm
Roof style	Tent roof
Roof type	Laminated safety glass
Colour	RAL 7016 - Anthracite grey
Base area	9,80 m ²
Mounting type	Floor mounting
Base material	Steel
Snow load	1,50 kN/m ²



This attractive pavilion-style shelter will bring your employees, customers or guests together. The „Paris“ octagonal, corrosion-resistant, colour-coated tubular steel construction with its pitched roof made of laminated safety glass guarantees longevity and durability in all weather conditions. The side panels made of

toughened safety glass can be printed with motifs of your choice. The all-round parapet also serves as rain drainage. Inside optional benches, bar tables and free-standing ashtrays provide comfort and tidiness. Kit for self-installation with easy-to-understand installation instructions.

- + Octagonal, hot-dip galvanised tubular steel construction
- + Pitched roof made of laminated glass or galvanised sheet steel
- + Side panels made of toughened safety glass
- + Colour scheme in RAL of your choice
- + Kit for self-installation