

## Dresden D4 a/a UP

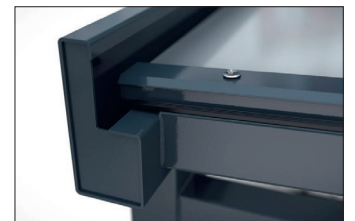
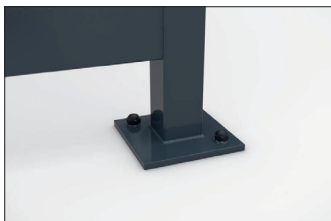
Your versatile and future-proof public transport shelter.

Type-tested, versatile shelter system with monopitch roof construction, Laminated safety glass roofing, with toughened safety glass rear and side walls.

| Article number | EAN           | Width   | Height  | Depth   |
|----------------|---------------|---------|---------|---------|
| 102100395      | 4250366538440 | 4380 mm | 2730 mm | 1510 mm |



|               |                            |
|---------------|----------------------------|
| Clear width   | 4260 mm                    |
| Clear height  | 2360 mm                    |
| Clear depth   | 1360 mm                    |
| Roof style    | Pent roof                  |
| Roof type     | Laminated safety glass     |
| Colour        | RAL 7016 - Anthracite grey |
| Base area     | 5,70 m <sup>2</sup>        |
| Mounting type | Floor mounting             |
| Base material | Steel                      |
| Snow load     | 2,50 kN/m <sup>2</sup>     |



Type-tested, versatile shelter system with square tubing uprights and elegant monopitch roof construction, Integrated water tank made of multiply folded and stiffened sheet steel and combined rain gutter. The roof is covered with frosted laminated safety glazing according to DIN 18008. The entire steel construction is hot-dip galvanised and coated with environmentally friendly

two-component paint with C4 medium corrosion protection class. Available in RAL colours of choice (except pearl and signal colours). Including rear and side panels made of clear toughened safety glass and fixed with glass holders. Five square tubing uprights with footplates for ground anchoring. Fully assembled.

- + Hot-dip galvanised steel monopitch roof construction
- + Heavy-duty roofing with preliminary static test
- + Toughened glass rear and side walls included
- + Custom coating in at least C4 medium quality
- + Fully assembled ex works

Further information on our products and contact options at: [www.wsm.eu/en](http://www.wsm.eu/en).  
No guarantee can be given for the completeness and correctness of the data and illustrations.