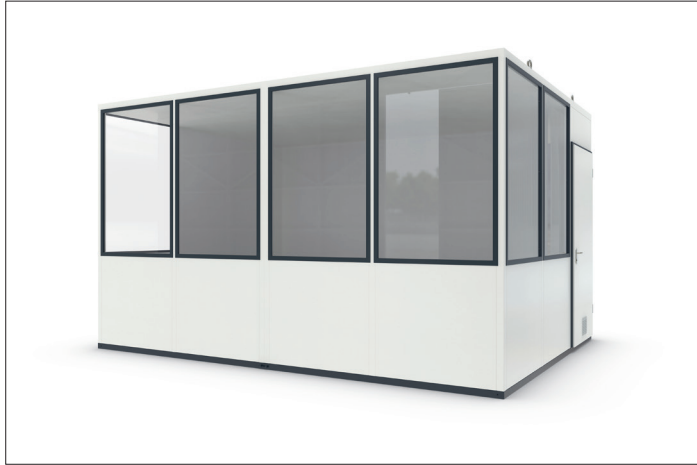


MultiRoom Basic 15 Starter Plus

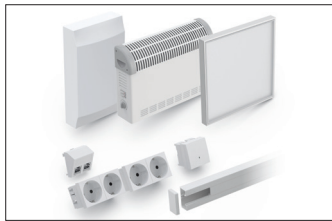
Create new working environments in record time

The ideal entry-level model for additional recreation rooms or hall offices. Standardised, flexible, quickly available and easy to assemble.

Article number	EAN	Width	Height	Depth
101700038	4250366541174	4560 mm	2280 mm	3390 mm



Clear width	4440 mm
Clear height	2160 mm
Clear depth	3270 mm
Location	Indoors
Office workplaces	2
Electrical package	Starter Plus
Colour	RAL 9002 - Grey white
Number of wall elements	14
Base area	15,45 m ²
Crane hook	Yes



This room system is the perfect entry-level model for companies that want to create additional recreation rooms or hall offices indoors. Thanks to the standardised construction and the limited design options, this version is inexpensive and can be delivered quickly when things have to move fast. At the same time, the modular system allows you to design your working environment

according to your needs. The robust steel construction can be subsequently relocated thanks to crane eyes and forklift pockets, which means you do not have to commit to permanent structural changes. Assembly can be carried out either in the factory or on site. Electrical package Starter Plus is ideal for recreation rooms.

- + Robust steel construction
- + Fast delivery
- + Can be subsequently moved by means of crane lugs and forklift pockets
- + Assembly in the manufacturer's works or on site
- + Electrical package Starter Plus

Further information on our products and contact options at: www.wsm.eu/en.
No guarantee can be given for the completeness and correctness of the data and illustrations.