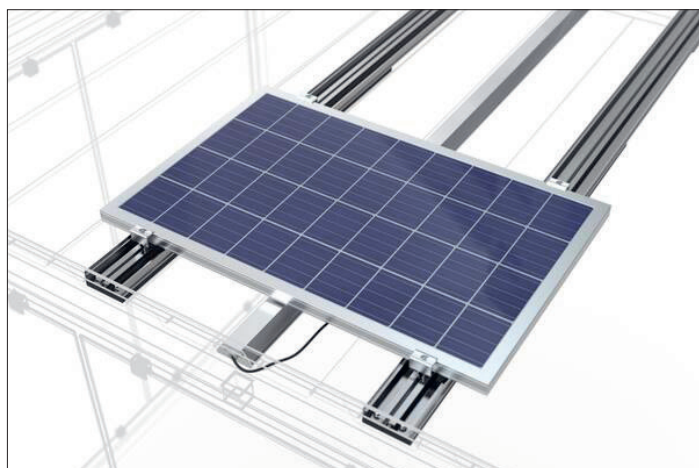


InLight+ with VersoVolt 115

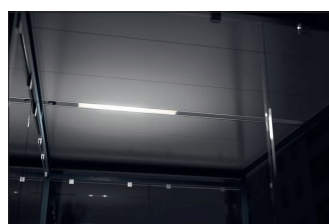
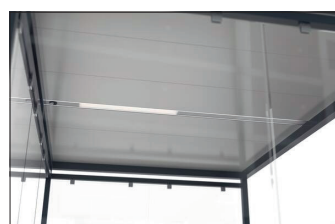
Sustainably and safely light up the night, everywhere.

The sophisticated lighting system that defies not only wind and weather but also vandalism. Without a connection to the power grid, only with solar energy.

| Article number | EAN | Width | Height | Depth |
|----------------|---------------|-------|--------|---------|
| 102002075 | 4250366541266 | 92 mm | 40 mm | 2106 mm |



| | |
|----------------------------|-----------|
| Base material | Aluminium |
| Operating voltage | 18 V |
| Total output | 115 W |
| Illuminant | LED |
| Presence detector | Yes |
| Protection class IP | IP44 |
| Protection class | Class II |
| External power supply unit | Yes |
| Radiation | Direct |
| Radiation angle | 120° |



Charged by Day, Lights by Night. Thanks to the innovative design, the lighting blends seamlessly into the trapezoidal sheet metal of the roof structure and is thus protected against vandalism at the same time. The energy-saving LED lighting not only guarantees a long service life, but also consumes less energy thanks to the

intelligent presence detector - the lighting dims when it is not needed. The photovoltaic system installed on the roof feeds the lighting autonomously; no earthworks are required for a connection to the power grid. The solar panels remain invisible without conductors so that they do not attract unnecessary attention.

- + Recessed in the roof construction and protected against vandalism
- + Wide illumination with only one luminaire
- + Low energy consumption, long service life thanks to LED technology
- + Illumination intensity is controlled by a presence detector
- + Power supply through a photovoltaic system mounted

Further information on our products and contact options at: www.wsm.eu/en.
No guarantee can be given for the completeness and correctness of the data and illustrations.