

# Passau P12

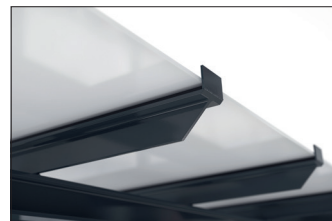
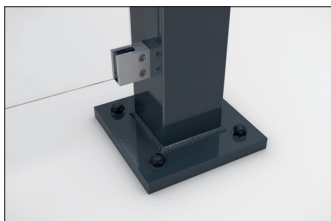
## An aesthetic eye-catcher in the modern cityscape

Shelter system with elegant glazed pent roof construction. Rear and side walls of toughened safety glass. Type statics tested in advance.

Article number	EAN	Width	Height	Depth
102100350	4250366537047	3100 mm	2435 mm	2090 mm



Clear width	2900 mm
Clear height	2200 mm
Clear depth	1500 mm
Roof style	Pent roof
Roof type	Laminated safety glass
Colour	RAL 7016 - Anthracite grey
Base area	4,30 m <sup>2</sup>
Mounting type	Floor mounting
Base material	Steel
Snow load	1,90 kN/m <sup>2</sup>



The sleek and modern design of this shelter system makes it an attractive focal point in the cityscape. The large glass surfaces and elegant pent roof speak a contemporary language and are architecturally inspired by modern buildings. The Passau is perfectly suited as a person or bicycle shelter and due to the type testing it can be placed anywhere without additional static verification. The rear and side walls are made of toughened safety

glass, while the roof is made of laminated safety glass pursuant DIN 18008. Drainage is via ground level water spouts. The shelter is bolted and dowelled to the ground with base plates. Designed for durability and a long service life, the supporting structure is hot-dip galvanised and coated in environmentally friendly colours. Available in numerous RAL colours.

- + Elegant pent roof construction with type statics
- + Roof covering made of laminated safety glass pursuant DIN 18008
- + Gutters and integrated drainage
- + Custom coating in min. C4 medium quality
- + Ideally suited as a person shelter

Further information on our products and contact options at: [www.wsm.eu/en](http://www.wsm.eu/en).  
No guarantee can be given for the completeness and correctness of the data and illustrations.