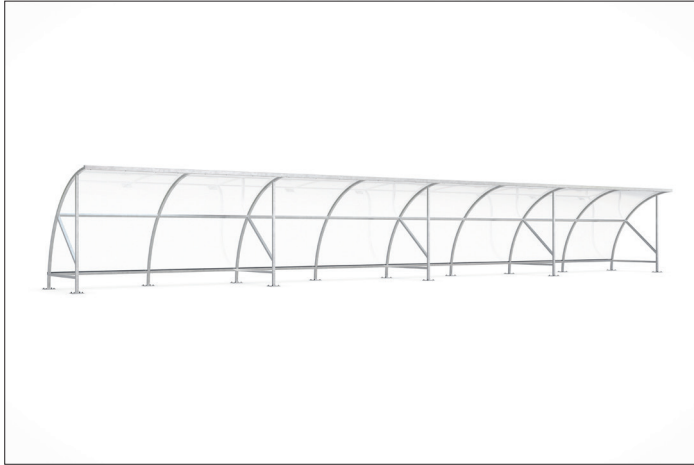


# Bamberg B 1/16

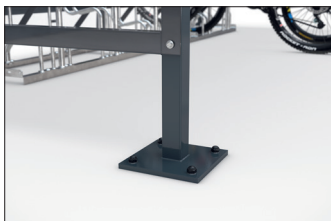
**Protect bicycles from weather economically and practically**

Solid construction with hot-dip galvanised steel frame and high-quality polycarbonate as a bicycle parking facility shelter system. Delivered as a kit.

Article number	EAN	Width	Height	Depth
102100418		16450 mm	2290 mm	2100 mm



Clear height	2200 mm
Roof style	Arched roof
Colour	Silver
Base area	34,54 m <sup>2</sup>
Mounting type	Floor mounting
Base material	Steel
Snow load	0,85 kN/m <sup>2</sup>



With the „Bamberg“ arched shelter system and one of our bicycle parking systems you can create attractive, weather-protected parking spaces for your employees' and customers' bicycles and e-bikes; and all that economically. The shelter is protected against corrosion and value retentive thanks to the galvanised steel

frame. The transparent roof element and the optional sidewalls are made of high-quality polycarbonate and just as weather-resistant as the frame. „Bamberg“ can easily be extended to form a row system and thus also offers protection for large quantities of bicycles. Simply assemble and bolt down.

- + Robust steel construction, available in two sizes
- + Corrosion-resistant, value-retentive through galvanising
- + Roof element in polycarbonate
- + Optional side panels for better wind protection
- + Speedy delivery as a kit, including foundation plan

Further information on our products and contact options at: [www.wsm.eu/en](http://www.wsm.eu/en).  
No guarantee can be given for the completeness and correctness of the data and illustrations.