

# BW 5156/300

## Bicycle Stands for Advertising BW 5000

Mobile sturdy tubular steel construction with height-offset parking hoops and large-format sheet steel advertising display, usable on both sides.

Article number	EAN	Width	Height	Depth
105100047	4250366531090	1050 mm	1400 mm	390 mm



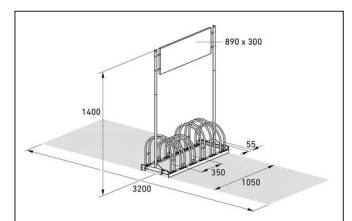
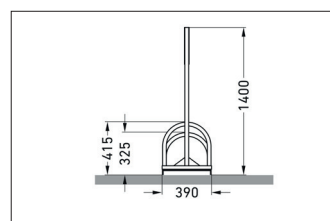
Advertising space	Yes
Advertising space width	890 mm
Advertising space height	300 mm
Parking spaces	6
Colour	Silver
Wheel distance	350 mm
Tyre width	55 mm
Weight	25,40 kg



The BW 5000 advertising bike rack with parking spaces that can be accessed on both sides not only offers comfortable parking space for customers' or employees' bicycles and pedelecs – it also has a large-format, double-sided advertising surface made of sheet steel, colour-coated in RAL 9010 Pure white and printable

completely according to your wishes. Unmissable 890 x 645 mm or 890 x 300 mm WXH are available for your company or organisation name etc. When required, insert the optionally available outrigger tubes of models BW 5053 and BW 5156 and simply roll your promotional bicycle rack to its location.

- + For one or two-sided parking
- + Easy to move by means of side-mounted castors
- + Robust steel construction with bow-shaped hoops
- + Corrosion-proof and long-lasting thanks to galvanising
- + Hoop spacing for bicycles with tyre widths of up to 55 mm



Further information on our products and contact options at: [www.wsm.eu/en](http://www.wsm.eu/en).  
No guarantee can be given for the completeness and correctness of the data and illustrations.